

COMBINED PLANER AND THICKNESSER

MSP 310 M

Spare part catalogue
For serviceman

ROJEK

Woodworking Machinery
Masarykova 16
517 50 Castolovice
Czech Republic

Tel.: +420 494 339 137-41
Fax: +420 494 323 341
E-mail: export@rojek.cz
www.rojek.cz

ND 204:

- 220 - Independent feeding motor
- 221 - Planing table extension
- 222 - Rollers of thickening table
- 223 - Table rollers

ND 208:

- 203 - Mortiser cover
- 206 - Gearing box
- 207 - Drive
- 211 - Cutterblock R
- 212 - Cutterblock G
- 213 - Cutterblock TERSA
- 214 - Support of cutterblock
- 216 - Feeding roller
- 217 - Pressure roller
- 218 - Plates
- 225 - Bodies, braces, captures

ND 209:

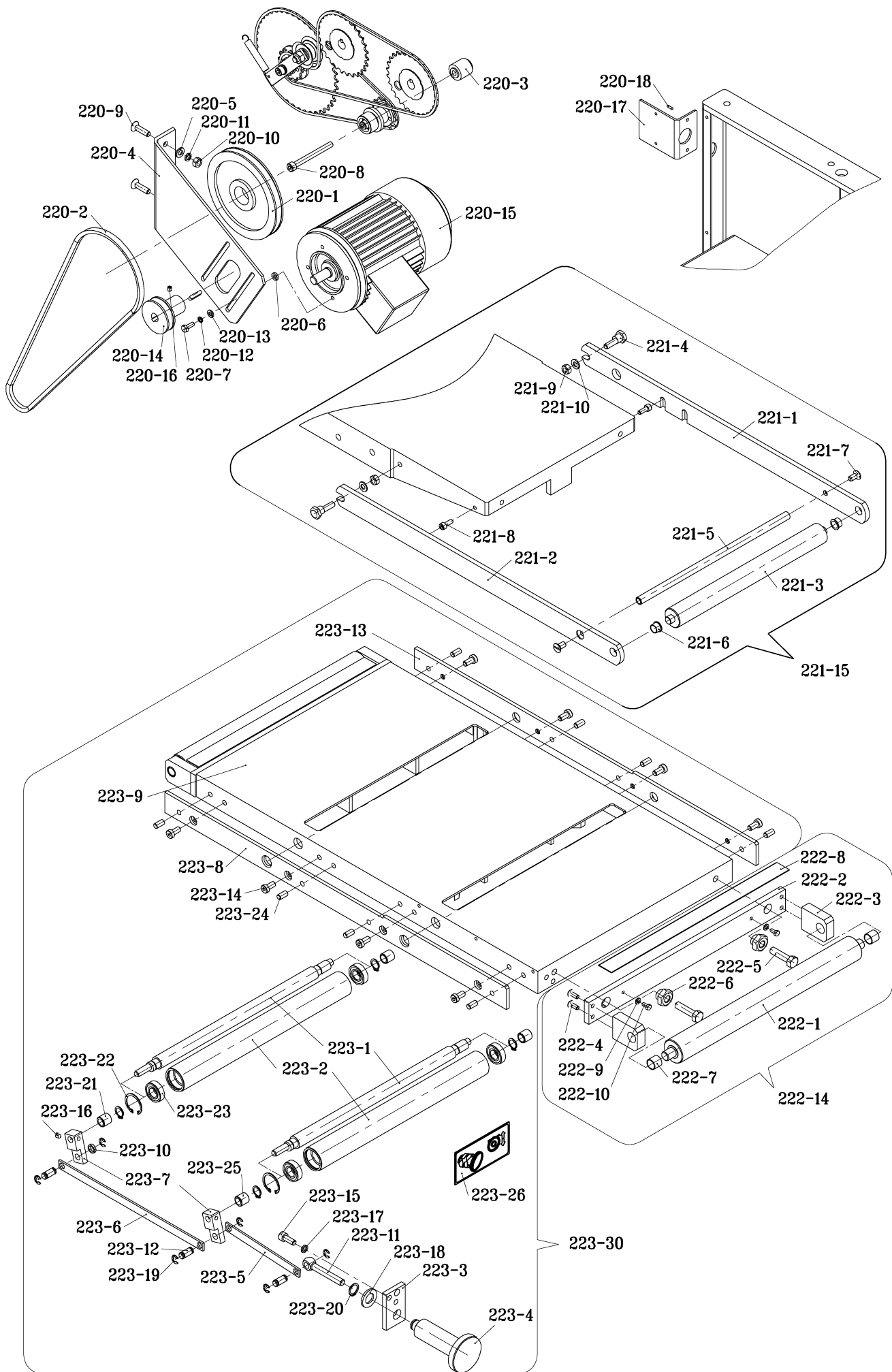
- 209 - Fence
- 210 - Cutterblock protection
- 224 - Auxiliary fence
- 226 - Planing tables

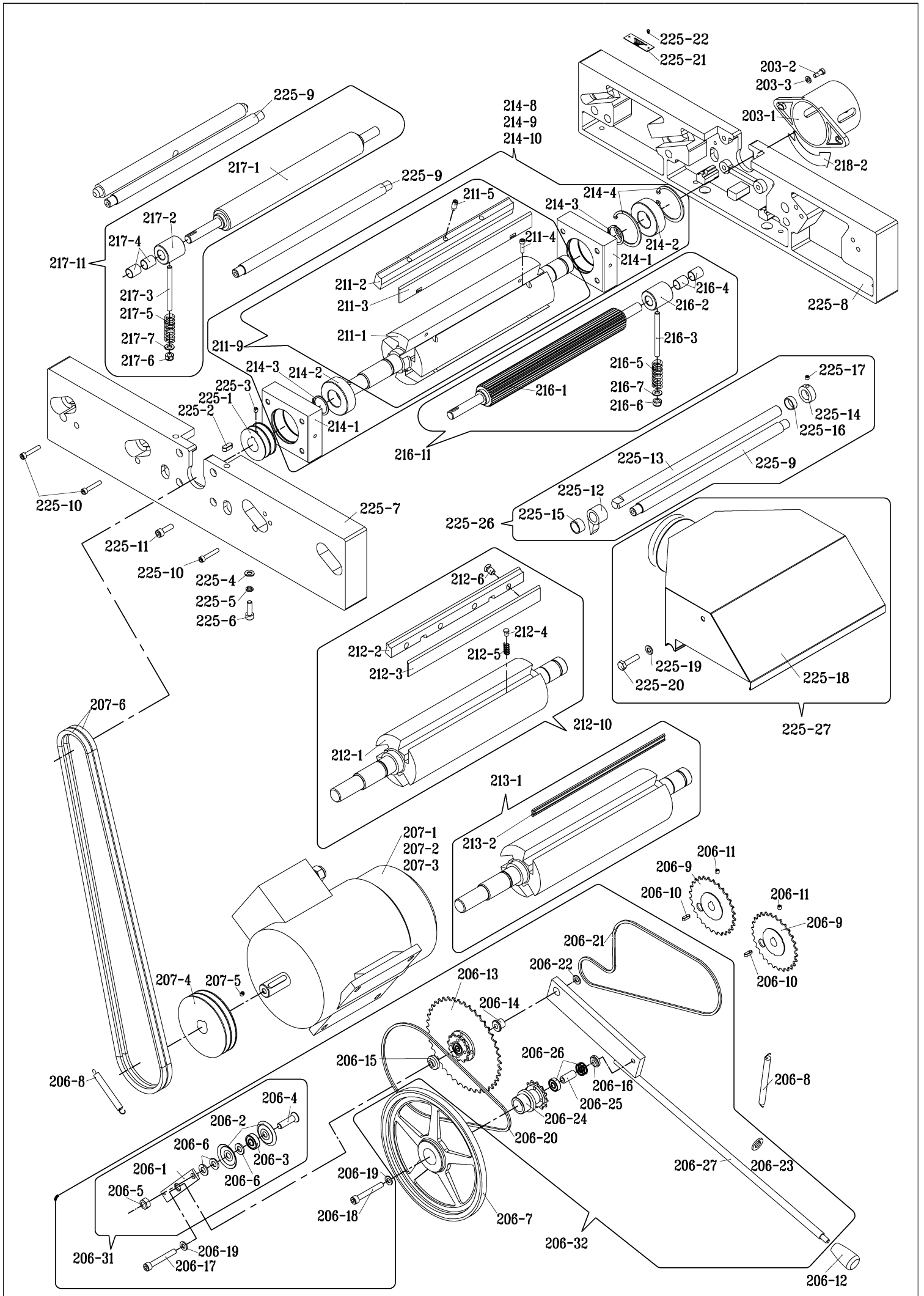
ND 210:

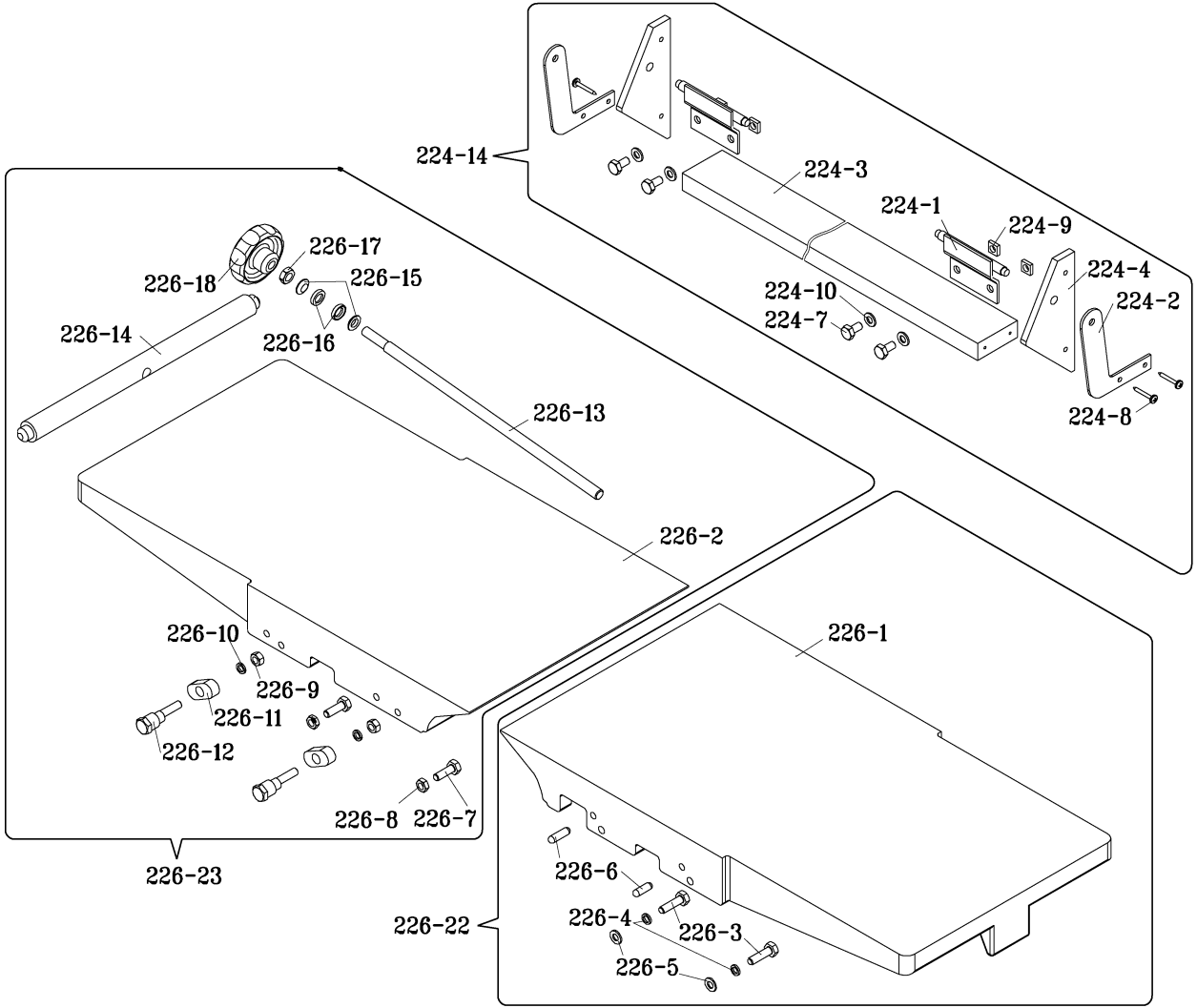
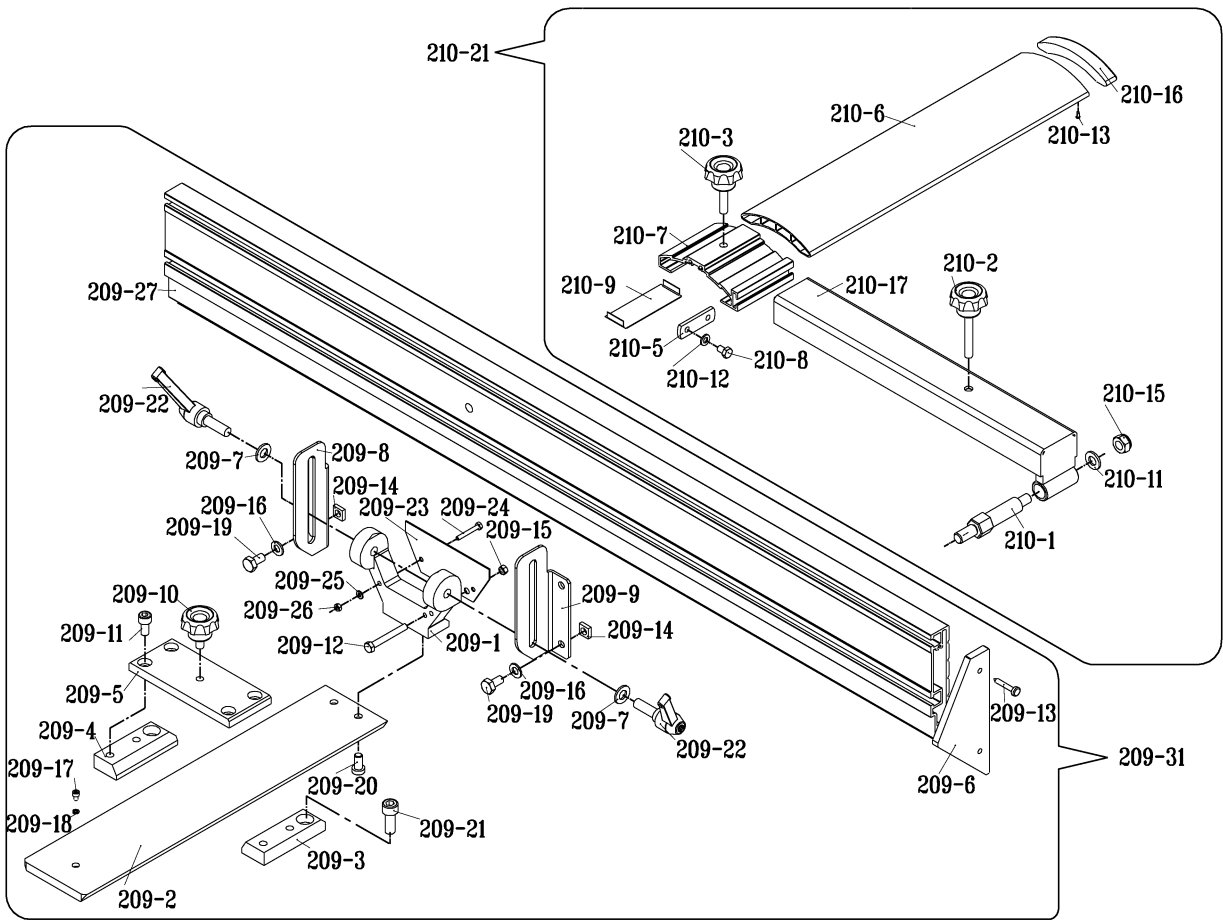
- 219 - Covering

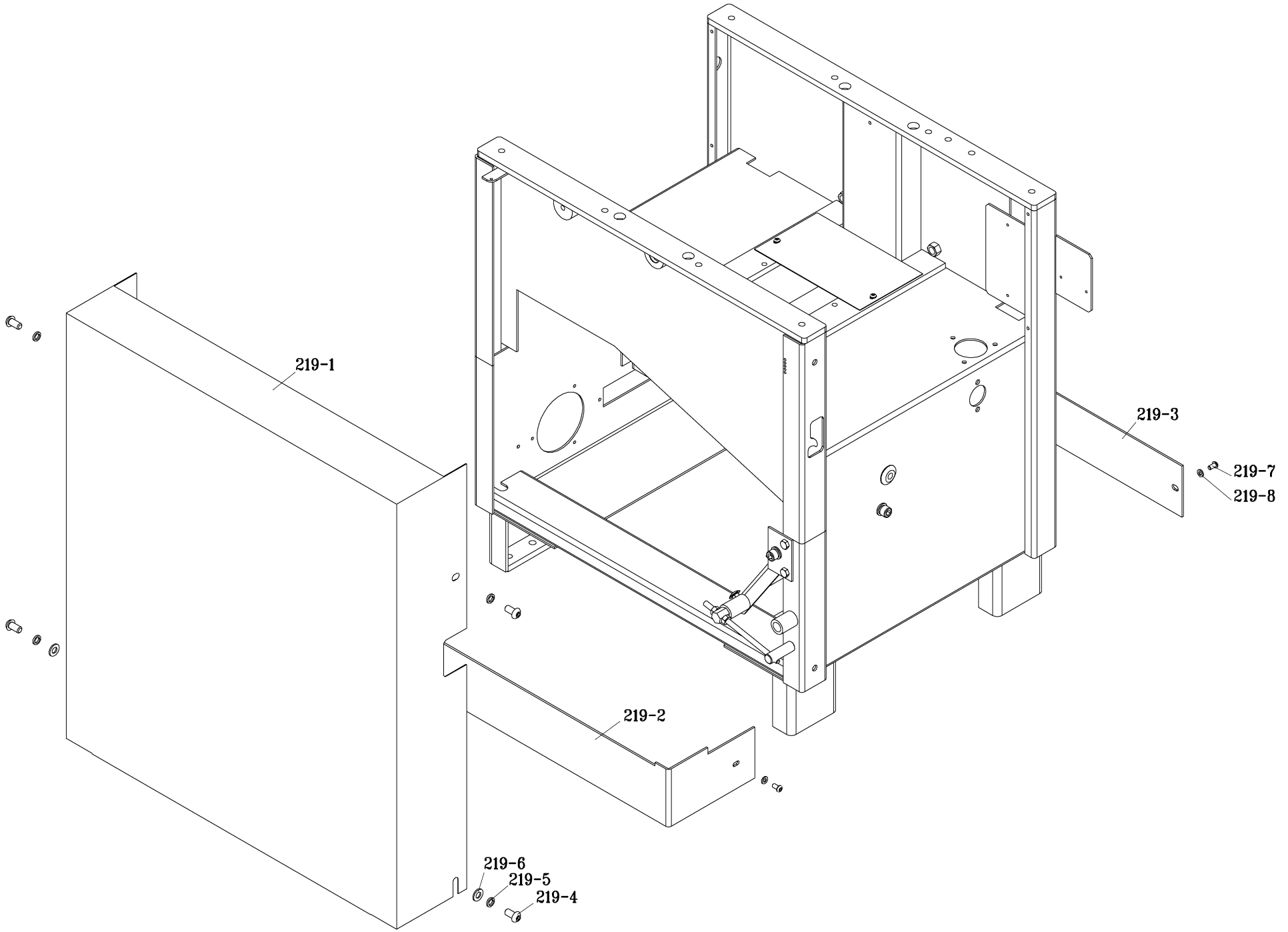
ND 211:

- 20 - External earthing screw
- 21 - Internal earthing screw with nut
- 201 - Body
- 202 - Thickening
- 203 - Mortiser cover
- 204 - Electric equipment
- 218 - Plates









COMBINED PLANER AND THICKNESSER MSP 310 M					
Position	Description	Norm	Stock number	pc	Note
20	External earthing screw				
20-1	Screw 5 x 25	ČSN 02 1103.8	6 311 816 076 800	1	
20-2	Nut M5	ČSN 021401.8	6 311 826 002 000	2	
20-3	Washer 5,3	ČSN 02 1702.50	6 311 836 011 100	4	
20-4	Washer 5,3	ČSN 02 1744.05	6 311 131 767 300	2	
20-5	Metal plate earthing		6 548 232 010 020	1	
20-6	Drive screw 2,9 x 6,5	DIN 27 410	6 311 151 170 900	2	
21	Internal earthing screw with nut				
21-1	Screw 5 x 25	ČSN 02 1103.8	6 311 816 076 800	1	
21-2	Nut M5	ČSN 021401.8	6 311 826 002 000	1	
21-3	Washer 5,3	ČSN 02 1702.50	6 311 836 011 100	3	
21-4	Washer 5,3	ČSN 02 1744.05	6 311 131 767 300	1	
21-5	Label EARTHING		6 548 232 010 000	1	
201	Body				
201-1	Body	2 157 101	7 215 710 100 000	1	
201-2	Motor holder	2 177 111	7 217 711 100 000	1	
201-3	Pin of tensioner		3 162 108	1	
201-4	Bracket		3 177 110	1	
201-5	Pin		3 177 111	1	
201-6	Motor pin		3 177 113	1	
201-7	Pin		3 177 114	1	
201-8	Support		3 175 115	1	
201-9	Screw M10 x 20	ČSN 02 1143.55	6 311 113 646 700	2	
201-10	Nut M8	ČSN 02 1492.25	6 311 123 901 000	1	
201-11	Washer 10,2	ČSN 02 1740.05	6 311 131 765 800	2	
201-12	Screw M8 x 30	ČSN 02 1319	6 311 111 172 230	4	
201-13	Nut M8	ČSN 02 1401.25	6 311 122 702 600	6	
201-14	Washer 8,2	ČSN 02 1740.05	6 311 131 765 700	6	
201-15	Washer 8,4	ČSN 02 1702.15	6 311 131 711 300	4	
201-16	Screw M8 x 20	ČSN 02 1103.15	6 311 131 711 400	2	
201-17	Washer 10,5	ČSN 02 1702.15	6 311 131 711 400	2	
201-22	Plug		6 284 300 104 809	1	
201-23					
201-24					
201-25	Cover-piece		3 910 147	2	
201-26	Screw M5 x 10	ISO 7380	6 310 101 006 110	4	
201-27					
201-28	Cover of thicknesser		3 910 149	1	
201-29	Screw M5 x 8	DIN 965	6 310 101 006 085	5	
201-30	Plate		3 155 920	4	

COMBINED PLANER AND THICKNESSER MSP 310 M					
Position	Description	Norm	Stock number	pc	Note
201-31	Screw M10 x 40	ČSN 02 1103.25	6 309 203 083 400	4	
201-32	Nut M10	ČSN 02 1401.25	6 311 122 702 800	4	
201-33					
201-34					
201-35					
201-36	Assembly		2 177 110	1	
202	Thicknessing				
202-1	Thicknessing table		3 150 402	1	
202-2	Right guide strip		3 162 138.1	1	
202-3	Left guide strip		3 162 079.1	1	
202-4	Screw M5 x 10	ČSN 02 1151.25	6 309 251 000 400	6	
202-5	Table column		2 150 405	1	
202-6	Profile		3 150 410	1	
202-7	Plate		3 150 411	1	
202-8	Screw M10 x 20	DIN 6912	6 310 101 005 396	6	
202-9	Screw M8 x 30	ČSN 02 1103.25	6 309 203 081 460	4	
202-10	Screw M6 x 40	ČSN 02 1103.25	6 309 203 079 500	1	
202-11	Nut M6	ČSN 02 1401.25	6 311 122 702 200	1	
202-12	Washer 10,2	ČSN 02 1740.05	6 311 131 765 800	6	
202-13	Washer 8,2	ČSN 02 1740.05	6 311 131 765 700	4	
202-14	Lubricating head type 01351	ČSN 02 7420	6 425 111 000 080	1	
202-15	Protection collar Ø100	ČSN 02 9295	6 273 112 490 230	1	
202-16	Adjusting ring		3 900 410	1	7 390 041 000 000
202-17	Screw M6 x 60	ČSN 02 1101.25	6 309 201 014 760	2	
202-18	Screw M8 x 10	ČSN 02 1187.72	6 311 112 301 000	2	
202-19	Corrugated screw		3 150 416	1	
202-20	Washer 6,1	ČSN 02 1740.05	6 311 131 765 600	2	
202-21	Washer 8,4	ČSN 02 1702.15	6 311 131 711 300	4	
202-22	Washer 6,4	ČSN 02 1702.15	6 311 131 711 200	2	
202-23	Case of screw wheels		3 612 035	1	
202-24	Screw wheel		3 900 415	1	
202-25	Bronze bearing		3 900 411	1	
202-26	Ring		3 612 007	1	
202-27	Needle axial bearing	AXK 1528	6 324 165 560 120	1	
202-28	Axial ring	AS 1528	6 324 165 560 110	2	
202-29	Pin 5 x 24	DIN 7344	6 311 151 072 900	1	
202-30	Ring 10	ČSN 02 2930.00	6 311 173 075 500	1	
202-31	Silon bushing		3 910 143	1	

COMBINED PLANER AND THICKNESSER MSP 310 M					
Position	Description	Norm	Stock number	pc	Note
202-32	Ring 20	ČSN 02 2930.00	6 311 173 077 600	1	
202-33	Measuring tape 230		3 150 440	1	mm
202-33	Measuring tape		3 910 440	1	inch
202-34	Leading bar		3 150 420	1	
202-35	Column guide		3 150 421.1	1	
202-36	Flange		3 900 426.1	1	
202-37	Bar		3 150 425	1	
202-38	Pipe		3 150 426	1	
202-39	Fixing handle M10		6 321 870 000 000	1	
202-40	Pin 4 x 14	ČSN 02 2156	6 311 151 132 860	1	
202-41	Nut M10	ČSN 02 1401.25	6 311 122 702 800	1	
202-42	Adjusting ring 18		3 900 417	1	7 390 041 700 000
202-43	Indicator		3 150 439	1	
202-44	Screw M8 x 25	ČSN 02 1143.55	6 309 543 250 200	4	
202-45	Screw M8 x 20	ČSN 02 1103.15	6 309 203 081 400	2	
202-46	Screw M8 x 10	ČSN 02 1187.72	6 311 112 301 000	1	
202-47	Screw M8 x 16	ČSN 02 1187.72	6 311 114 061 500	4	
202-48	Screw M6 x 20	ČSN 02 1103.25	6 309 203 078 900	3	
202-49	Screw M5 x 12	ČSN 02 1143.55	6 311 113 641 300	2	
202-50	Screw M4 x 8 METALVIS		6 309 201 004 800	2	
202-51	Fixing handle M8		6 321 464 000 850	1	
202-52	Nut M8	ČSN 02 1401.25	6 311 122 702 600	2	
202-53	Washer 8,2	ČSN 02 1740.05	6 311 131 765 700	2	
202-54	Washer 6,1	ČSN 02 1740.05	6 311 131 765 600	3	
202-55	Washer 8,4	ČSN 02 1702.15	6 311 131 711 300	2	
202-56	Washer 5,1	ČSN 02 1740.05	6 311 131 765 600	2	
202-58	Blocking screw		3 150 446	1	
202-59	Wheel shaft		3 920 417	1	
202-60	Nut M10	ČSN 02 1492.25	6 311 123 901 100	1	
202-61	Washer 10,5	ČSN 02 1702.15	6 311 131 711 400	1	
202-62	Ring 18	ČSN 02 2930	6 311 173 077 200	1	
202-63	Washer 6,4	ČSN 02 1702.15	6 311 131 711 200	3	
202-64	Nut M8	ČSN 02 1403.25	6 311 122 722 400	1	
202-65	Washer 17	ČSN 02 1702.10	6 311 131 011 700	1	
202-66	Operating wheel 970	Ø175;Ø12H7	6 321 465 001 250	1	
202-67	Screw M8 x 16	DIN 914	6 310 101 005 997	2	
203	Mortiser cover				
203-1	Cover of mortising head		6 321 465 000 200	1	

COMBINED PLANER AND THICKNESSER MSP 310 M					
Position	Description	Norm	Stock number	pc	Note
203-2	Screw M6 x 16	ČSN 02 1131.25	6 311 112 472 105	2	
203-3	Washer 6,4	ČSN 02 1702.15	6 311 131 711 200	2	
203-4	cap 18/12/8,4		6 284 300 104 830	3	
204	Electric equipment				
204-1	Motor strater			1	
204-2	Control of emergency stop			1	
206	Gearing box				
206-1	Clip		3 150 516.1	1	
206-2	Side plate		3 162 061	2	
206-3	Bearing 6000 2RZ	ČSN 02 4640	6 324 165 010 000	1	
206-4	Screw M10 x 40	ČSN 02 1151.25	6 309 252 100 905	1	
206-5	Nut M10	ČSN 02 1401.25	6 311 122 702 800	1	
206-6	Washer 10,5	ČSN 02 1702.15	6 311 131 711 400	3	
206-7	Rubbered wheel		2 150 518.3	1	
206-8	Spring	3 300 139	6 315 952 019 300	2	
206-9	Chain wheel		2 150 520.1	2	
206-10	Feather 5 x 5 - 16	ČSN 02 2562	6 311 172 004 200	2	
206-11	Screw M6 x 8	DIN 914	6 310 101 005 985	2	
206-12	Handle 28 / M8	ČSN 02 5182.21	6 321 461 002 808	1	
206-13	Gear wheel		2 150 505.1	1	
206-14	Casing Ø15		3 150 504.2	1	
206-15	Casing		3 150 530.2	1	
206-16	Washer		3 150 531.1	1	
206-17	Screw M8 x 70	ČSN 02 1143.55	6 311 113 646 000	1	
206-18	Screw M8 x 60	ČSN 02 1143.55	6 311 113 645 900	1	
206-19	Washer 8,4	ČSN 02 1702.05	6 311 131 711 300	2	
206-20	Chain 081-1	ČSN 02 3311.00	6 318 113 081 000	1	66 elements
206-21	Chain 081-1	ČSN 02 3311.00	6 318 113 081 000	1	58 elements
206-22	Washer 8,4	ČSN 02 1726.15	6 311 131 120 800	1	
206-23	Adapted washer		3 157 521	1	
206-24	Hub of friction wheel		2 150 509.1	1	
206-25	Brace		3 150 532.1	1	
206-26	Bearing 608 2RS		6 324 155 919 700	2	
206-27	Lever		2 157 501	1	
206-28					
206-29					
206-30					
206-31	Assembly		2 150 515.2	1	
206-32	Assembly	2 157 502	7 215 750 200 000	1	

COMBINED PLANER AND THICKNESSER MSP 310 M					
Position	Description	Norm	Stock number	pc	Note
207	Drive				
207-1	Electric motor			1	According to the execution 1f-2,2kW 50(60)Hz 3F-2,2 3 3,7kW 50(60)Hz
207-2	Motor plate			1	According to electric motor
207-3	Earthing cable - assembly			1	
207-4	Motor pulley		3 910 323	1	50 Hz
207-4	Motor pulley		3 910 323.1	1	60 Hz
207-5	Screw M6 x 8	DIN 914	6 310 101 005 985	1	
207-6	V-belt SPZ 1450 La		6 272 790 001 445	2	50 Hz
207-6	V-belt SPZ 1400 La		6 272 790 001 440	2	60 Hz
209	Fence				
209-1	Holder		3 165 003	1	
209-2	Sliding plate		3 150 703	1	
209-3	Right strip		3 170 187	1	
209-4	Left strip		3 170 188	1	
209-5	Plate		3 170 190	1	
209-6	Cover plate	3 910 756	6 321 461 100 756	2	
209-7	Washer 11	ČSN 02 1727.05	6 311 131 125 400	2	
209-8	Left metal plate of fence		3 910 753	1	
209-9	Right metal plate of fence		3 910 754	1	
209-10	Rosette Ø40	3 910 744	6 321 461 100 015	1	
209-11	Screw M8 x 16	ČSN 02 1143.55	6 311 113 644 500	4	
209-12	Screw M5 x 40	ČSN 02 1103.25	6 309 203 077 200	1	
209-13	Screw 5 x 30 METALVIS	01140 ZB 5030	6 311 146 100 000	4	
209-14	Nut M8 4hr	DIN 562 ZB	6 311 127 000 800	4	
209-15	Nut M5	ČSN 02 1401.25	6 311 122 702 000	1	
209-16	Washer 8,4	ČSN 02 1702.15	6 311 131 711 300	4	
209-17	Screw M4 x 6	ČSN 02 1143.55	6 311 113 620 600	1	
209-18	Washer 4	ČSN 02 1740.05	6 311 131 765 400	1	
209-19	Screw M8 x 16	ČSN 02 1103.25	6 309 203 081 200	4	
209-20	Screw M8 x 16	DIN 7984	6 310 111 008 160	2	
209-21	Screw M10 x 20	ČSN 02 1143.55	6 311 113 646 700	2	
209-22	Fixing handle M10 x 20		6 321 465 001 200	2	

COMBINED PLANER AND THICKNESSER MSP 310 M					
Position	Description	Norm	Stock number	pc	Note
209-23	Metal cover		3 165 054	1	
209-24	Screw M4 x 30	ČSN 02 1101.25	6 309 203 074 310	2	
209-25	Washer 4,3	ČSN 02 1702.15	6 311 131 711 050	2	
209-26	Nut M4	ČSN 02 1401.25	6 311 122 701 900	2	
209-27	Fence profile		3 165 002	1	
209-28					
209-29					
209-30					
209-31	Assembly		2 155 707k	1	
210	Cutterblock protection				
210-1	Pin		3 910 780.1	1	
210-2	Rosette M8		2 170 117	1	
210-3	Rosette Ø40	2 620 017.1	6 321 461 100 000	1	
210-5	Steel band		3 910 779	1	
210-6	Cover profile		3 910 789	1	
210-7	Holder profile		3 910 790	1	
210-8	Screw M6 x 10	ČSN 02 1103.25	6 309 203 078 400	2	
210-9	Slider		3 910 792	1	
210-10	Washer 13	ČSN 02 1702.15	6 311 131 711 500	1	
210-11	Washer 10,5	ČSN 02 1702.15	6 311 131 711 400	1	
210-12	Washer 6,4	ČSN 02 1745.05	6 311 131 770 400	2	
210-13	Drive screw 2,9 x 6,5	DIN 27 410	6 311 151 170 900	2	
210-15	Nut M10	ČSN 02 1492.25	6 311 123 901 100	1	
210-16	Profile cap	3 910 773	6 321 821 300 773	2	
210-17	Protection arm		2 910 775	1	
210-18					
210-19					
210-20					
210-21	Assembly		2 155 760	1	
211	Cutterblock R				
211-1	Cutterblock		3 150 351	1	
211-2	Fixing wedge		3 162 005.1	4	
211-3	Cutter 310 x 30 x 3	3 162 011	6 411 410 290 000	4	
211-4	Adjusting screw		3 162 012	8	
211-5	Screw M8 x 20	DIN 915	6 312 112 270 100	12	
211-6					
211-7					
211-8					
211-9	Assembly		2 150 301	1	

COMBINED PLANER AND THICKNESSER MSP 310 M					
Position	Description	Norm	Stock number	pc	Note
212	Cutterblock G				
212-1	Cutterblock		3 912 351	1	
212-2	Wedge		3 912 352	3	
212-3	Cutter 310 x 30 x 3	3 162 011	6 411 410 290 000	3	
212-4	Pin		3 912 302	6	
212-5	Spring	3 480 131	6 315 952 019 850	6	
212-6	Screw		3 912 367	12	
212-7					
212-8					
212-9					
212-10	Assembly		2 912 301	1	
213	Cutterblock TERSA				
213-1	Monoblock TERSA 310 with knives		6 411 410 290 001	1	
213-2	Cutter TERSA 310		6 411 410 290 002	4	
214	Support of cutterblock				
214-1	Bearing body		3 150 303.2	2	
214-2	Bearing 62 206 2RS		6 324 215 000 207	2	
214-3	Ring 30	ČSN 02 2930.00	6 311 173 079 000	2	
214-4	Ring 62	ČSN 02 2931.00	6 311 173 088 800	2	
214-5					
214-6					
214-7					
214-8	Cutterblock with support 310 R	sk. 211 + uložení	2 150 301k	1	
214-9	Cutterblock with support 310 G	sk. 212 + uložení	2 150 302k	1	
214-10	Cutterblock with support 310 TERSA	sk. 213 + uložení	2 150 303k	1	
216	Feeding roller				
216-1	Feeding roller		3 150 525.1	1	
216-2	Stone		3 150 527	2	
216-3	Screw M8 x 80		3 150 555	2	
216-4	Casing KU 1520	ČSN 02 3406	6 323 251 181 930	4	
216-5	Spring	3 162 139	6 315 817 000 190	2	
216-6	Nut M8	ČSN 02 1492.25	6 311 123 901 000	2	
216-7	Washer 8,4	ČSN 02 1702.15	6 311 131 711 300	2	
216-8					
216-9					
216-10					

COMBINED PLANER AND THICKNESSER MSP 310 M					
Position	Description	Norm	Stock number	pc	Note
216-11	Assembly		2 150 505k	1	
217	Pressure roller				
217-1	Pressure roller		3 150 526.1	1	
217-2	Stone		3 150 527	2	
217-3	Screw M8 x 80		3 150 555	2	
217-4	Casing KU 1520	ČSN 02 3406	6 323 251 181 930	4	
217-5	Spring	3 162 139	6 315 817 000 190	2	
217-6	Nut M8	ČSN 02 1492.25	6 311 123 901 000	2	
217-7	Washer 8,4	ČSN 02 1702.15	6 311 131 711 300	2	
217-8					
217-9					
217-10					
217-11	Assembly		2 150 506k	1	
218	Plates				
218-1	Sticker FIXING	3 900 145	6 548 232 010 235	1	
218-2	Sticker - right direction of rotation	3 162 142	6 548 232 162 142	1	
218-3	Sticker TABLE LIFTING	3 920 133	6 548 232 162 213	1	
218-4	Sticker FEEDING ROLLERS	3 910 168	6 548 232 010 238	1	
218-5	Production plate			1	According to the execution
218-6	Nail 2,9 x 6,5	DIN 27 410	6 311 151 170 900	4	
218-7	Sticker CE		6 548 232 007 015	1	
219	Covering				
219-1	Covering		3 155 771	1	
219-2	Front metal cover		3 157 151	1	
219-3	Back metal cover		3 157 152.1	1	
219-4	Screw M10 x 20	ISO 7380	6 310 111 006 220	4	
219-5	Washer 10,2	ČSN 02 1740.05	6 311 131 765 800	4	
219-6	Washer 10,5	ČSN 02 1702.15	6 311 131 711 400	2	
219-7	Screw M6 x 12	ISO 7380	6 310 101 007 000	4	
219-8	Washer 6,4	ČSN 02 1702.15	6 311 131 711 200	4	
221	Planing table extension				
221-1	Right strip		3 755 003/1	2	
221-2	Left strip		3 755 004/1	2	
221-3	Roller		3 755 005	2	
221-4	Eccentric screw		3 755 006	4	
221-5	Brace		3 755 007	2	

COMBINED PLANER AND THICKNESSER MSP 310 M					
Position	Description	Norm	Stock number	pc	Note
221-6	Casing	BB 1209 EP	6 323 250 000 100	4	
221-7	Screw M8 x 16	ČSN 02 1151.25	6 309 251 280 000	4	
221-8	Screw M6 x 16	ČSN 02 1143.55	6 309 543 260 616	4	
221-9	Nut M8	ČSN 02 1401.25	6 311 122 702 600	4	
221-10	Washer 8,4	ČSN 02 1702.15	6 311 131 711 300	4	
221-11					
221-12					
221-13					
221-14	Assembly		2 755 001	1	
222	Rolers of thicknessing table				
222-1	Roller		3 405 091	2	
222-2	Strip		3 405 092	2	
222-3	Bracket		3 405 093	4	
222-4	Screw M6 x 16	ČSN 02 1151.25	6 309 251 260 611	8	
222-5	Screw M10 x 40	ČSN 02 1101.55	6 309 201 019 910	4	
222-6	Table eccenter		3 166 014	4	
222-7	Casing KU 1515	ČSN 02 3406	6 323 251 181 920	4	
222-8	Cover		3 405 095	2	
222-9	Washer 5,3	ČSN 02 1702.15	6 311 131 711 100	4	
222-10	Screw M5 x 10	ČSN 02 1103.25	6 309 203 076 000	4	
222-11					
222-12					
222-13					
222-14	Assembly		2 405 090	1	
224	Auxiliary fence				
224-1	Hinge		2 165 051	2	
224-2	Holder		3 165 052	2	
224-3	Fence	3 165 053	6 415 504 320 500	1	
224-4	Cover plate		3 910 756.1	2	
224-5					
224-6					
224-7	Screw M8 x 16	ČSN 02 1103.25	6 309 203 081 200	4	
224-8	Screw 4,8 x 32	ČSN 02 1136.27	6 311 115 700 000	4	
224-9	Nut M8	DIN 562	6 311 127 000 800	4	
224-10	Washer 8,4	ČSN 02 1702.15	6 311 131 711 300	4	
224-11					
224-12					
224-13					
224-14	Assembly		2 165 050	1	

COMBINED PLANER AND THICKNESSER MSP 310 M					
Position	Description	Norm	Stock number	pc	Note
225	Bodies, braces, captures				
225-1	Cutterblock pulley		3 915 305.1	1	
225-2	Feather 8 x 20	ČSN 02 2562	6 311 172 007 150	1	
225-3	Screw M6 x 8	DIN 914	6 310 101 005 985	1	
225-4	Washer 8,4	ČSN 02 1702.15	6 311 131 711 300	8	
225-5	Washer 8,2	ČSN 02 1740.05	6 311 131 765 700	8	
225-6	Screw M8 x 25	ČSN 02 1143.55	6 309 543 250 200	8	
225-7	Right body		3 155 202	1	
225-8	Left body		3 155 201	1	
225-9	Distance ring		3 155 224	3	
225-10	Screw M6 x 40	ČSN 02 1143.55	6 309 543 144 095	6	
225-11	Screw M8 x 25	ČSN 02 1143.55	6 309 543 250 200	8	
225-12	Catcher		3 162 035	15	
225-13	Catcher bar		3 150 218	1	
225-14	Ring		3 150 658	1	
225-15	Distance tube		3 162 039	1	
225-16	Pipe		3 162 040	1	
225-17	Screw M6 x 6	ČSN 02 1187.72	6 311 112 290 780	1	
225-18	Suction hood		2 155 030	1	
225-19	Washer 8,4	ČSN 02 1702.15	6 311 131 711 300	1	
225-20	Screw M8 x 35	ČSN 02 1103.25	6 309 203 081 475	1	
225-21	Indicator - stock removal	3 162 157	6 415 504 010 000	1	mm
225-21	Indicator - stock removal	3155157	6 548 232 503 920	1	inch
225-22	Nail 2,9 x 6,5	DIN 27 410	6 311 151 170 900	2	
225-23					
225-24					
225-25					
225-26	Assembly		2 155 504k	1	
225-27	Assembly		2 155 031k	1	
226	Planing tables				
226-1	Fixed table		3 155 001	1	
226-2	Adjustable table		3 155 002	1	
226-3	Screw M8 x 35	ČSN 02 1103.25	6 309 203 081 475	4	
226-4	Washer 8,2	ČSN 02 1740.05	6 311 131 765 700	4	
226-5	Washer 8,4	ČSN 02 1702.15	6 311 131 711 300	4	
226-6	Pin 8 x 30	ČSN 02 2150.1	6 311 151 075 650	4	
226-7	Screw M8 x 25	ČSN 02 1103.80	6 311 816 079 500	2	
226-8	Nut M8	ČSN 02 1403.25	6 311 122 722 400	2	

COMBINED PLANER AND THICKNESSER MSP 310 M					
Position	Description	Norm	Stock number	pc	Note
226-9	Nut M8	ČSN 02 1401.25	6 311 122 702 600	4	
226-10	Washer 8,2	ČSN 02 1740.05	6 311 131 765 700	4	
226-11	Guide		3 162 019	4	
226-12	Eccentric screw		3 155 020	4	
226-13	Motion screw		3 155 017	1	
226-14	Motion nut		3 155 018	1	
226-15	Washer 10,4		3 162 024	2	
226-16	Ring 11,5		3 162 025	2	
226-17	Nut M10	ČSN 02 1403.25	6 311 122 722 410	1	
226-18	Rosette Ø68	2 170 133	6 321 461 100 850	1	
226-19					
226-20					
226-21					
226-22	Assembly		2 155 030k	1	
226-23	Assembly		2 155 015k	1	

